

Water supply for the Schwann Allotments

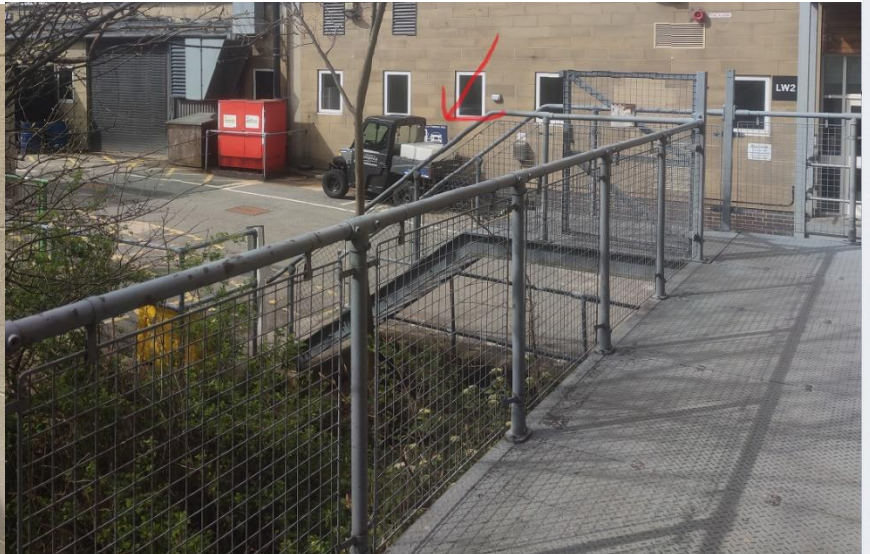
There is a water 'Lockshield key' hung up in the Schwann Allotment toolbox.

This can be used to access a tap for use with the watering cans for your planters.



The tap is located, round the corner from the Schwann rooftop, down the steps at the back of the Technology Building on the wall, just behind the charging point for Mr Tugsley (the Campus Support Electric Vehicle). It is turned off over the winter months but has now been turned back on.

To access the water, take over a watering can and then slot the square head of the key onto the base of the tap. Twist until the water is released. Twist the opposite way to close off the water supply.



Please make sure you fully turn the tap off after use and hang the water 'Lockshield key' back up in the toolbox, ready for the next persons use.

Thank you 😊